



AL AALI 1

TOWING VESSEL



PRINCIPAL PARTICULARS

Built	2008
Builder	Fujian Shipyard, China
Flag	Bahrain
Class	ABS
Class No.	08186307
Official No.	BN6007
IMO No.	9522506
Call Sign	A9IX
GRT	446
NRT	133
Bollard Pull (T)	Approx. 63

MACHINERY

Main Engines	2x Caterpillar 3126B
Power	2x 2575 Bhp
Generators	Caterpillar 2x 245Kw Stamford 1x45Kw
Propellers	2x Kort Nozzle
Rudders	2x
Oily Water Separator	Installed
Sewage Plant	Capacity 900L
Bow Thruster	180-200 Bhp

DECK EQUIPMENT

Towing Winch	Single Drum 120T hold
Anchor Windlass	Yes
Anchors (Stockless)	2x 800Kg
Tow Hook	Yes
Tagger Winch	Model 50Kn
Grove Crane	M977
Accommodation Full AC	12 Prs.

PRINCIPAL DIMENSIONS

Length (m) LBP/LOA	29.60/33.70
Breadth (m)	10.60
Depth (m)	4.96
Max. Draft (m)	4.00

CARGO CAPACITIES

Diesel Fuel Oil (T)	325
Potable Water (T)	99.4
Ballast (T)	52
Lub Oil Tank (T)	5.7

SPEED & CONSUMPTION

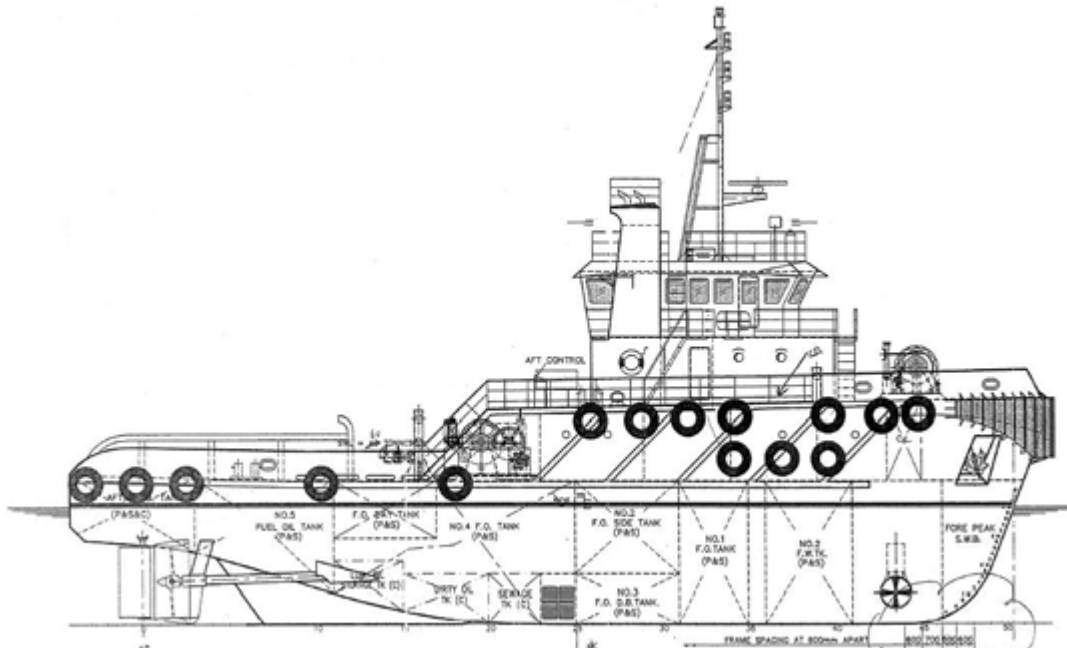
Max. Speed (Knots)	12.5
Daily Consumption (T/Day)	10.0
Fuel Type	MDO

NAVIGATION EQUIPMENT

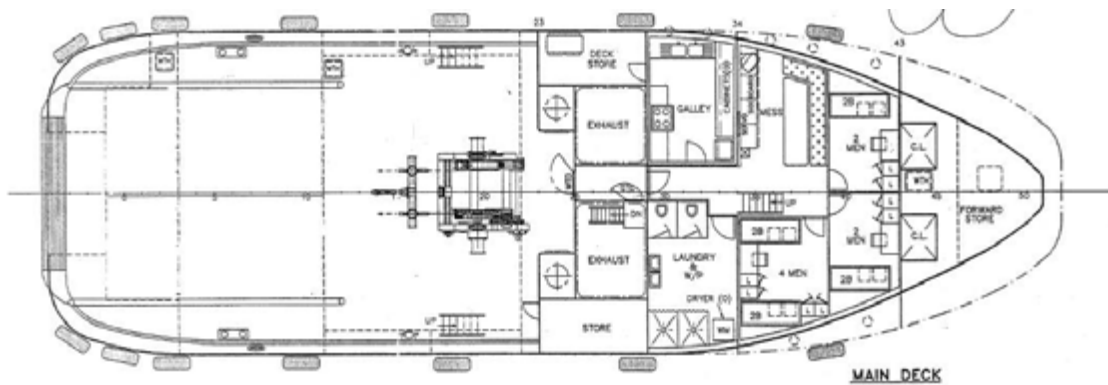
Navigation Controls	FWD & AFT
Autopilot	Raytheon NP 60
GPS	Furuno GP-150
Radar	JEC JMA 5210-6
Echo Sounder	Furuno FE 700
VHF Radio	Furuno FM 8800S
SSB Radio	Furuno FS-2570C
Gyro Compass	Tokinec ES 110
EPIRB	1 Set
Navtex	1 Set
Inmarsat-C	Yes
GMDSS	Area 3
Speed log	Installed



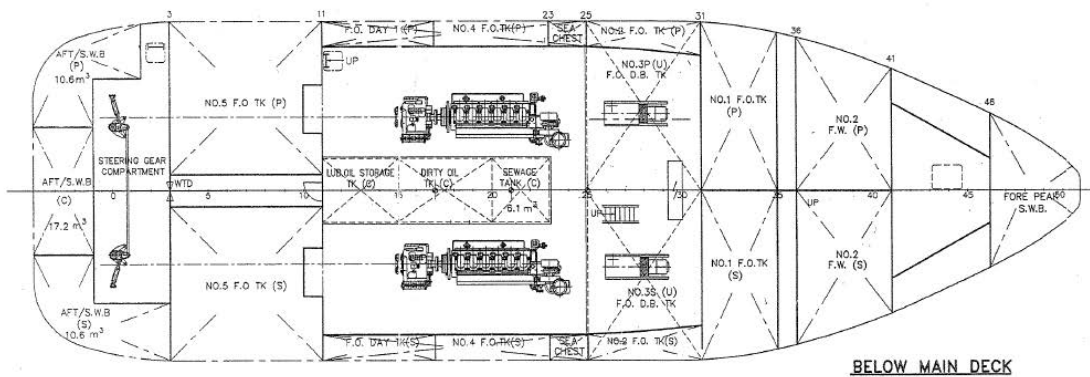
GENERAL ARRANGEMENT PLAN - AL AALI 1



SIDE VIEW



MAIN DECK VIEW



BELOW MAIN DECK VIEW