



DONA XIV

SMALL TUG



PRINCIPAL PARTICULARS

Built/Rebuilt	1976/2001
Builder	Slidrecht, Holland
Flag	Bahrain
Class	BV
Class No.	33P685
Official No.	BH8891
IMO No.	8134780
Call Sign	A9D2846
GRT	54
NRT	15
Bollard Pull (T)	4

MACHINERY

Main Engines	2x Caterpillar D334
Power	435 hp
Generators	30Kva,220V,50Hz / 18Kva,220V,50Hz
Propellers	2
Rudders	2

DECK EQUIPMENT

Towing Hook	15T
Crane	5T

PRINCIPAL DIMENSIONS

Length(m) LOA	18.75
Breadth (m)	5.50
Depth (m)	2.75
Max. Draft (m)	2.60

CARGO CAPACITIES

Fuel Oil (T)	15
Potable Water (T)	15

SPEED & CONSUMPTION

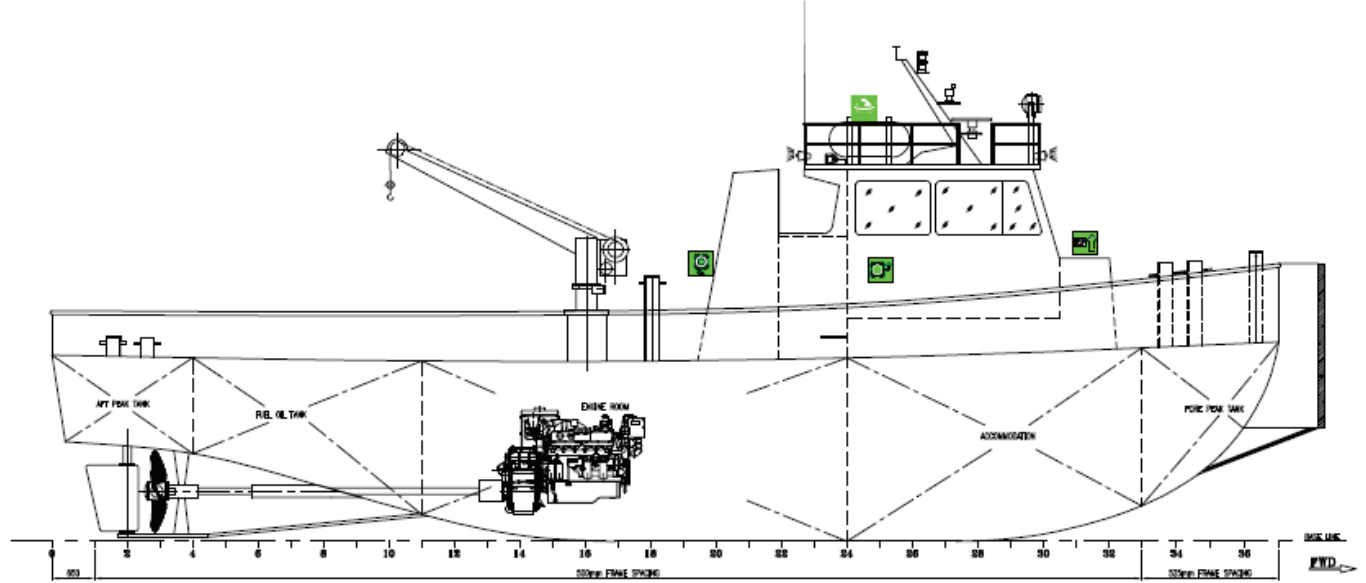
Max. Speed (Knots)	10.5
Daily Consumption (T)	max. 1.25
Fuel Type	MGO

NAVIGATION EQUIPMENT

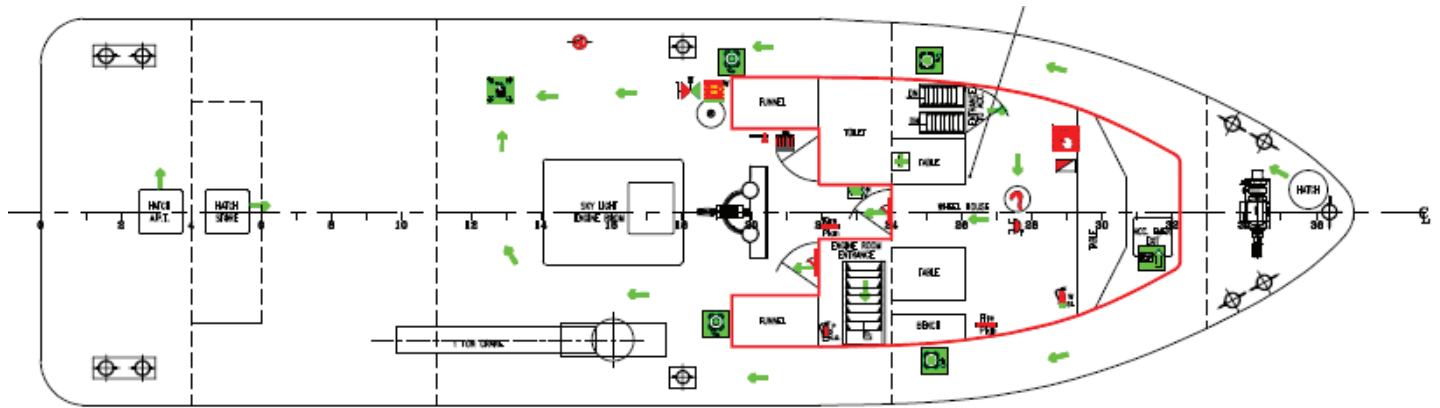
GPS	-
Radar	-
Echo Sounder	-
VHF Radio	-
Magnetic Compass	-



GENERAL ARRANGEMENT PLAN - DONA XIV



SIDE VIEW



TOP VIEW DECK LEVEL