



GTO 250

BARGE: SPUD



PRINCIPAL PARTICULARS

Built	2017
Builder	Nantong Gangzha, China
Flag	Bahrain
Official No.	BN8001
Class	ABS
Class No.	YY270618
GRT	2337
NRT	701
Deadweight (T)	4448
Lightship (T)	1604
Displacement (T)	6052

PRINCIPAL DIMENSIONS

Length (m) LOA/LBP	76.20 / 73.18
Breadth (m)	24.38
Depth (m)	4.88
Max. Draft (m)	3.60

CARGO CAPACITIES

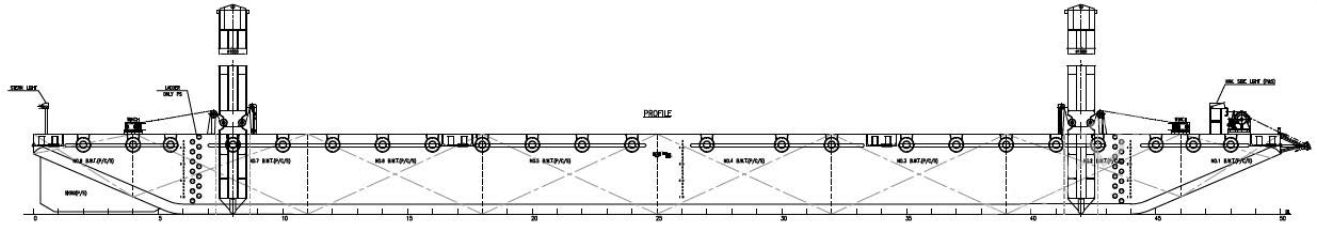
Deck Area Approx. m ²	1400
Deck Strength T/m ²	25
Spuds	4 nos 65" x 23m (+winches)

* Additional Stability for 400T & 650T Manitowoc Cranes to be Loaded on Deck

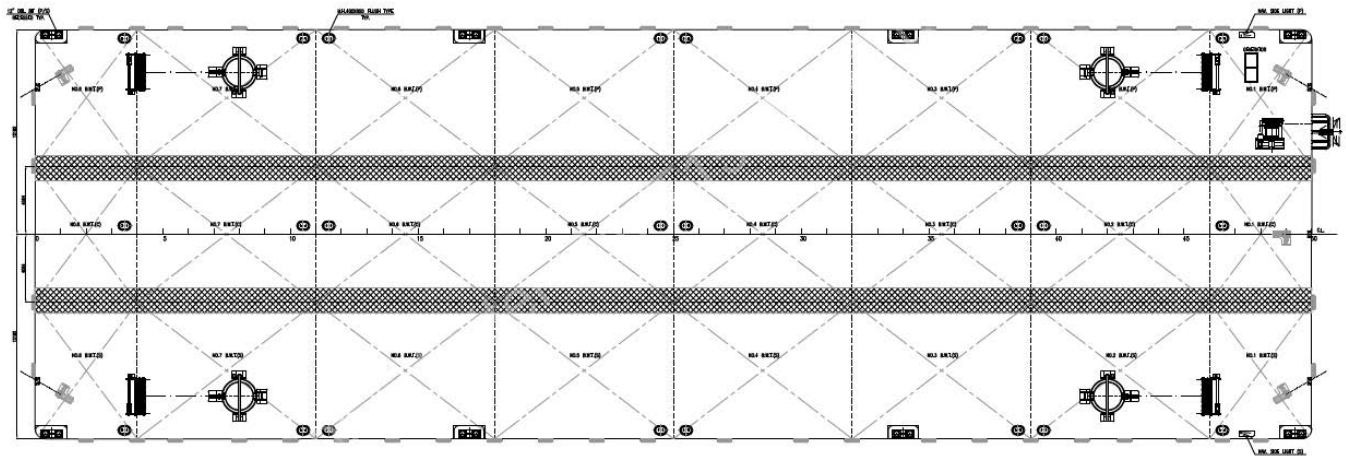
ALL BARGES CAN BE FITTED WITH SPUD LEGS, SIDE WALLS, RAMP & MOORINGS BY REQUEST.



GENERAL ARRANGEMENT PLAN - GTO 250



SIDE VIEW



TOP VIEW DECK LEVEL