



GTO XXI

BARGE: FLAT TOP



PRINCIPAL PARTICULARS

Built	1992
Builder	Inter Ocean Ship Repair, Fujairah, UAE
Flag	Bahrain
Offical No.	BN 3068
Class	Unclassed / BV Condition Survey
Class No.	03812V
GRT	237
NRT	71
Deadweight (T)	500
Displacement (T)	732

PRINCIPAL DIMENSIONS

Length (m)	32.12
Breadth (m)	12.00
Depth (m)	2.40
Max. Draft (m)	2.00

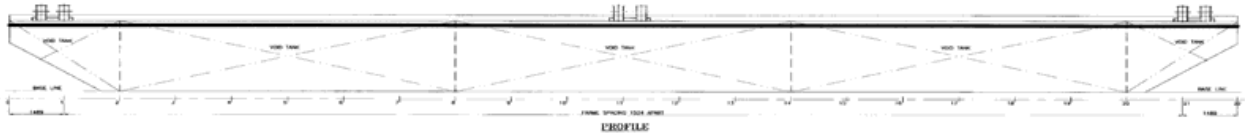
CARGO CAPACITIES

Deck Area (m ²)	330
Deck Strength (T/m ²)	2
No. of Tanks	14

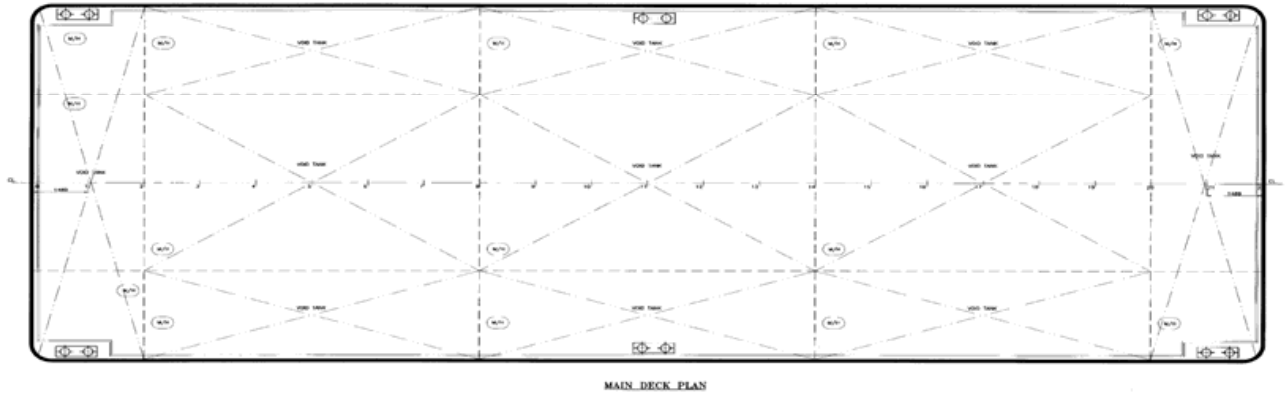
ALL BARGES CAN BE FITTED WITH SPUD LEGS, SIDE WALLS, RAMP & MOORINGS BY REQUEST.



GENERAL ARRANGEMENT PLAN - GTO XXI



SIDE VIEW



TOP VIEW DECK LEVEL