



PHOENIX

TOWING TUG



PRINCIPAL PARTICULARS

Built	1988
Builder	Universal Dockyard, Hong Kong
Flag	Bahrain
Class	BV
Class No.	900L77
Official No.	BN7513
IMO No.	8834299
Call Sign	A9D2523
GRT	121
NRT	36
Bollard Pull (T)	13
Deadweight (T)	78.8

MACHINERY

Main Engines	2x Caterpillar 3408 TA
Power	800 hp @ 1800 rpm
Generators	2x Cummins 37.5Kva, 380V, 50Hz, 3Ph
Propellers	2x Solid Brass with Kort Nozzles
Rudders	Twin Coupled Flat Blade

DECK EQUIPMENT

Tow Winch	1x Single Drum with Diesel Engine
Towing Wire / Rope	1x 250m / 32mm
Anchors	2x 300kg with 220m / 19mm
Anchors Winch	Electric

PRINCIPAL DIMENSIONS

Length (m) LOA/LWL	23.00 / 22.00
Breadth (m)	7.01
Depth (m)	3.55
Max. Draft (m)	3.25

CARGO CAPACITIES

Fuel Oil (m ³)	72
Potable Water (m ³)	22
Drill Water (m ³)	12

SPEED & CONSUMPTION

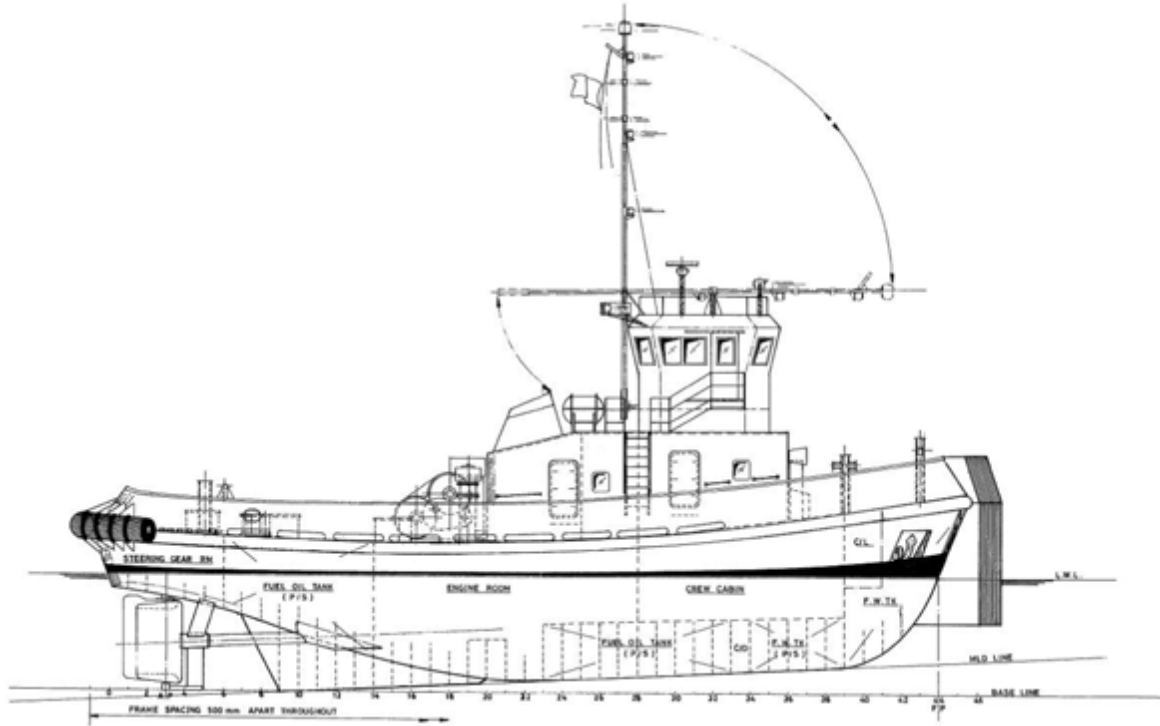
Max. Speed (Knots) Daily	10
Consumption (T)	2.75
Economical Speed (Knots)	8
Fuel Type	MGO

NAVIGATION EQUIPMENT

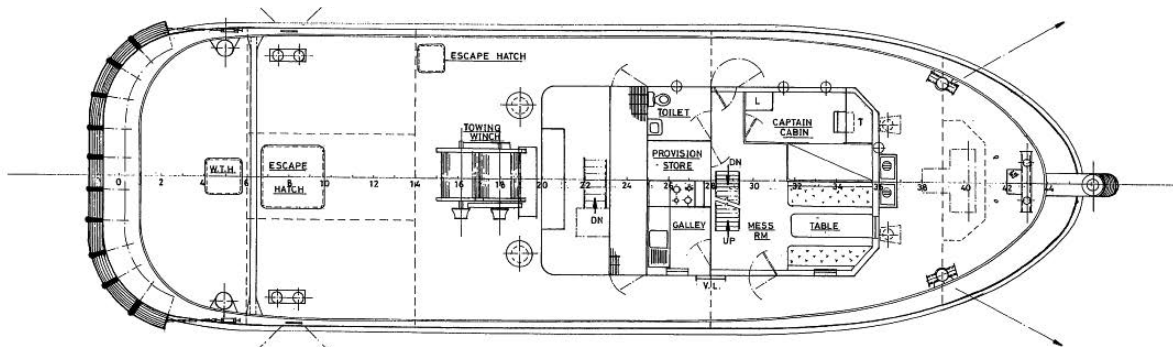
GPS	Koden
Auto Pilot	Robertson
Radar	Koden + Furuno
Echo Sounder	Koden
VHF Radio	2x Sailor
SSB Radio	ICOM
Magnetic Compass	Daiko Keiki



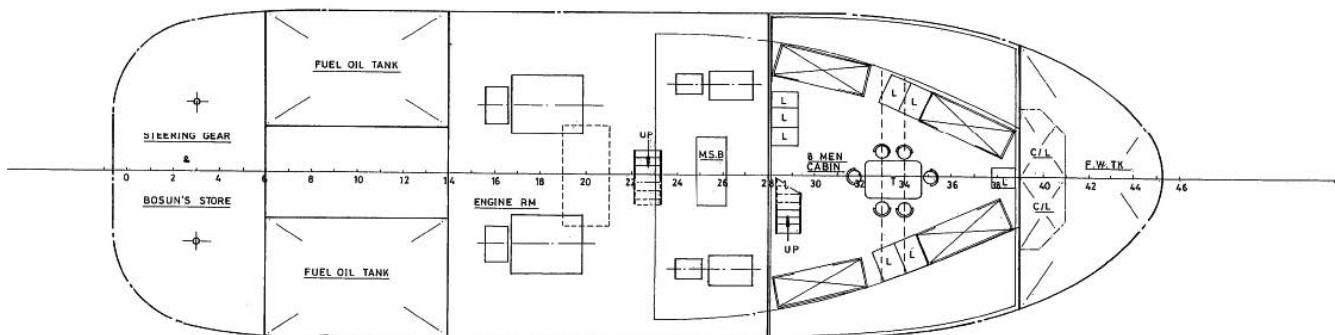
GENERAL ARRANGEMENT PLAN - PHOENIX



SIDE VIEW DECK LEVEL



MAIN DECK TOP VIEW



BELOW MAIN DECK TOP VIEW