



SEA LARK

CREW / PASSENGER BOAT



PRINCIPAL PARTICULARS

Built	1982
Builder	Damen Shipyard, Holland
Flag	Bahrain
Class	ABS
Class No.	8132582
Official No.	BH4101
Call Sign	A9D2410
GRT	54
NRT	17
Crew	4
Passengers	23

Barhain Cost Guard Approval:

Crew	4
Passengers	23

MACHINERY

Main Engines	2x GM
Power	1120 hp
Generators	2x 25Kw, 220/110V, 60Hz
Propellers	2
Rudders	2

NAVIGATION EQUIPMENT

GPS	1x Koden
Radar	1x Koden
Echo Sounder	1x Koden
VHF Radio	2x Sailor
Magnetic Compass	1x Corsair II

PRINCIPAL DIMENSIONS

Length (m) LOA/LBP	20.00/18.87
Breadth (m)	5.10
Depth (m)	2.93
Draft at SKEG (m)	1.50

CARGO CAPACITIES

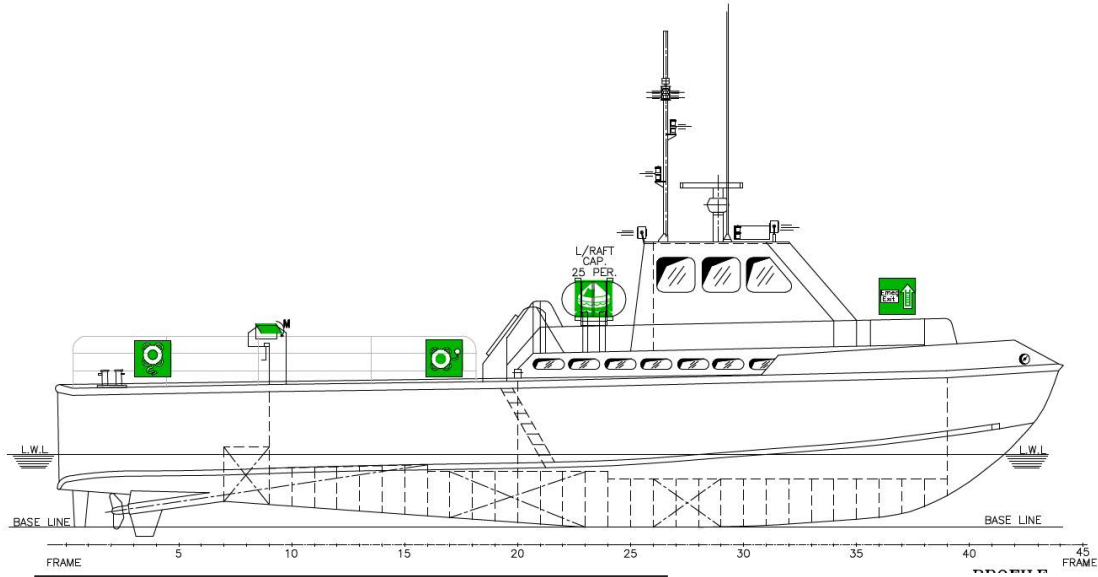
Fuel Oil (USG)	1480
Deck Cargo (T)	5
Deck Area (m ²)	67
Deck Strength (T/m ²)	0.5

SPEED & CONSUMPTION

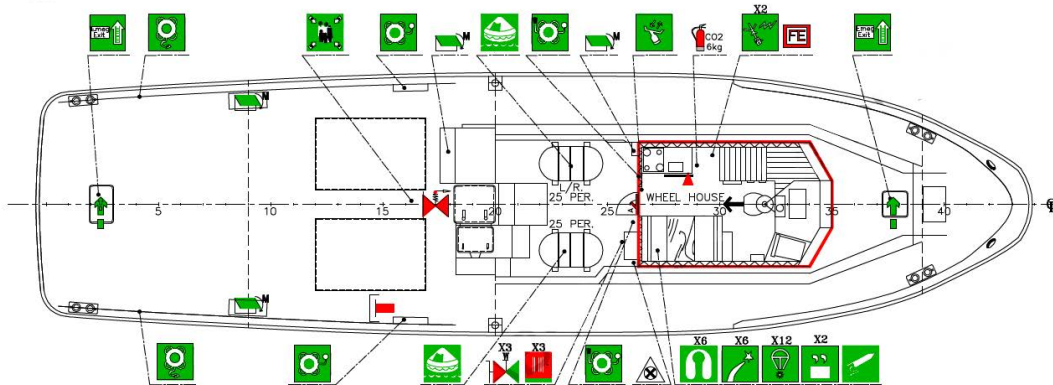
Max. Speed (Knots) Daily	17
Consumption (T)	1.85
Economical Speed (Knots)	12
Fuel Type	Marine Gas Oil



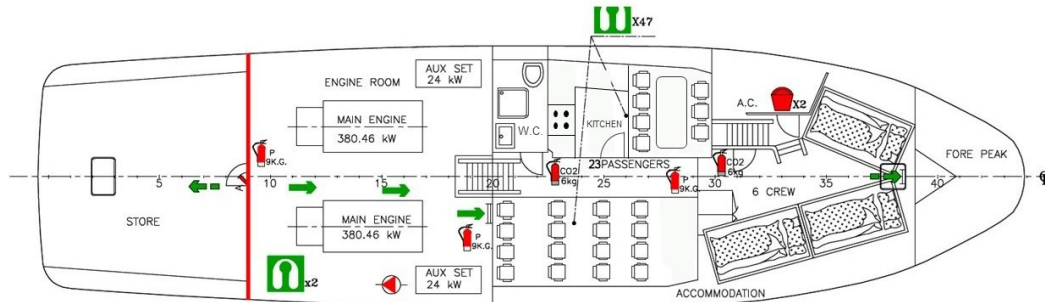
GENERAL ARRANGEMENT PLAN - SEA LARK



SIDE VIEW



TOP VIEW DECK LEVEL



BELOW DECK PLAN