



# SEA PILOT 2

## PILOT / CREW BOAT



### PRINCIPAL PARTICULARS

Built	2005
Builder	Damen Shipyards NL
Flag	Bahrain
Class	ABS
Class No.	05158485
Official No.	BH11097
Call Sign	A9D3267
GRT	50
NRT	15
Crew	2
Passengers	7

### Barhain Cost Guard Approval:

Crew	3
Passengers	5

### MACHINERY

Main Engines	2x Caterpillar
Power	1695 bhp @ 1800 rpm
Generators	2x 26 Kw, 32 Kva 24d.c 240V/415V 60Hz
Propellers	2x Fixed Pitch
E.R Ventilation	2x 1200m <sup>3</sup> /Hr

### SAFETY & FIRE FIGHTING EQUIPMENT

Liferaft	1x 10 Prs.
Life Buoys	3
Life Jackets	9
Fire Extinguishers	1xCO2, 3xDP, 1xFoam

### PRINCIPAL DIMENSIONS

Length (m) LOA	19.15
Breadth (m)	5.30
Depth (m)	2.70
Draft Aft. (m)	1.50

### CARGO CAPACITIES

Diesel Fuel Oil (Ltr)	5800
Header Tank (Ltr)	350
Potable Water (Ltr)	1000
Waste Water (Ltr)	330

### SPEED & CONSUMPTION

Max. Speed (Knots)	18
Consumption (T/day)	4.0
Fuel Type	MDO

### NAVIGATION EQUIPMENT

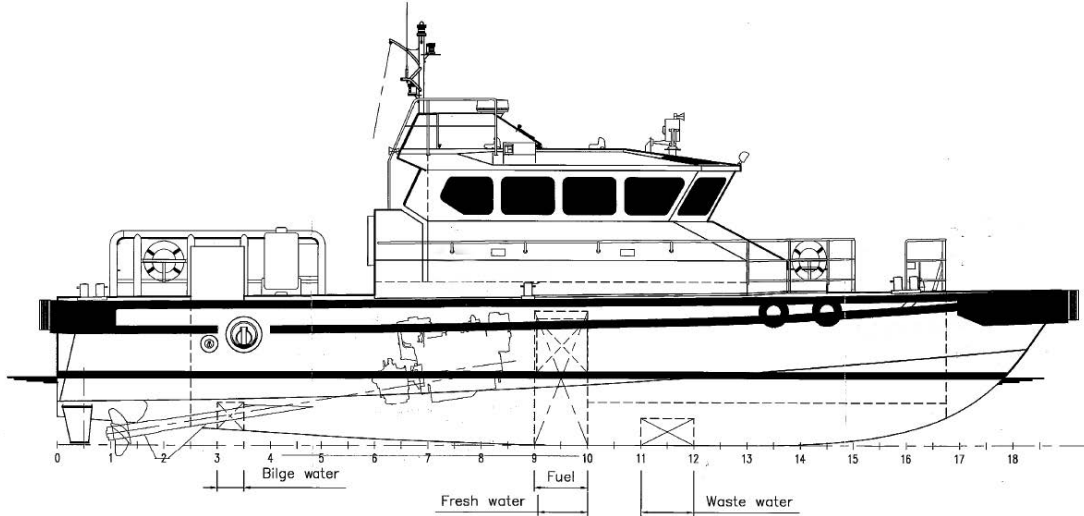
Searchlight	1x 250W 24V
Compass	Ritchie HB 71
Echo Sounder	Raymarine ST 60
VHF	Furuno FR 1832
GPS	Furuno GP 32
SART	McMurdo
Transmitters	Sailor RT 2048

### DECK EQUIPMENT

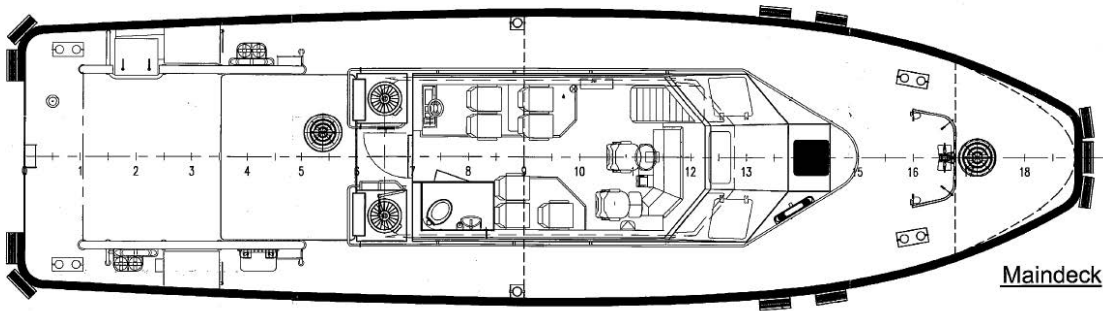
Deck Cargo	2.50 MT
Anchor	1x 9 Kg Guardian



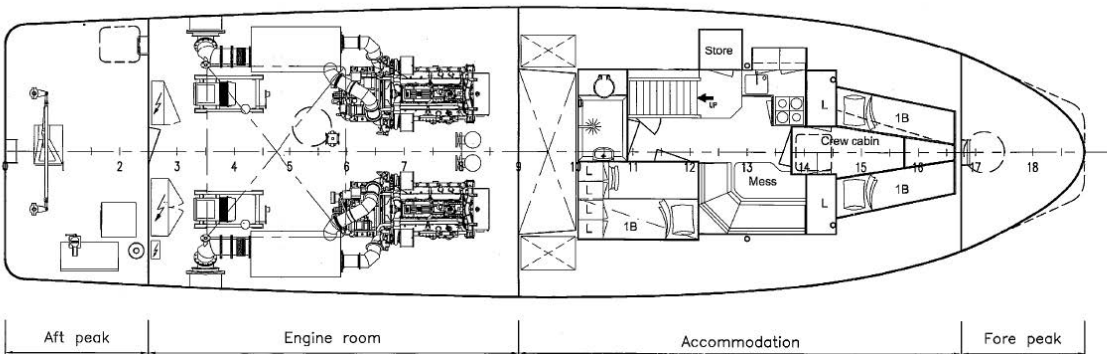
### GENERAL ARRANGEMENT PLAN - SEA PILOT 2



**SIDE VIEW**



**MAIN DECK VIEW**



**BELOW MAIN DECK VIEW**

Page — 2 The information contained in this data sheet is for guidance purposes only and may be subject to changes. © Al Jazeera Shipping Co W.L.L. All rights reserved.